

Additional data

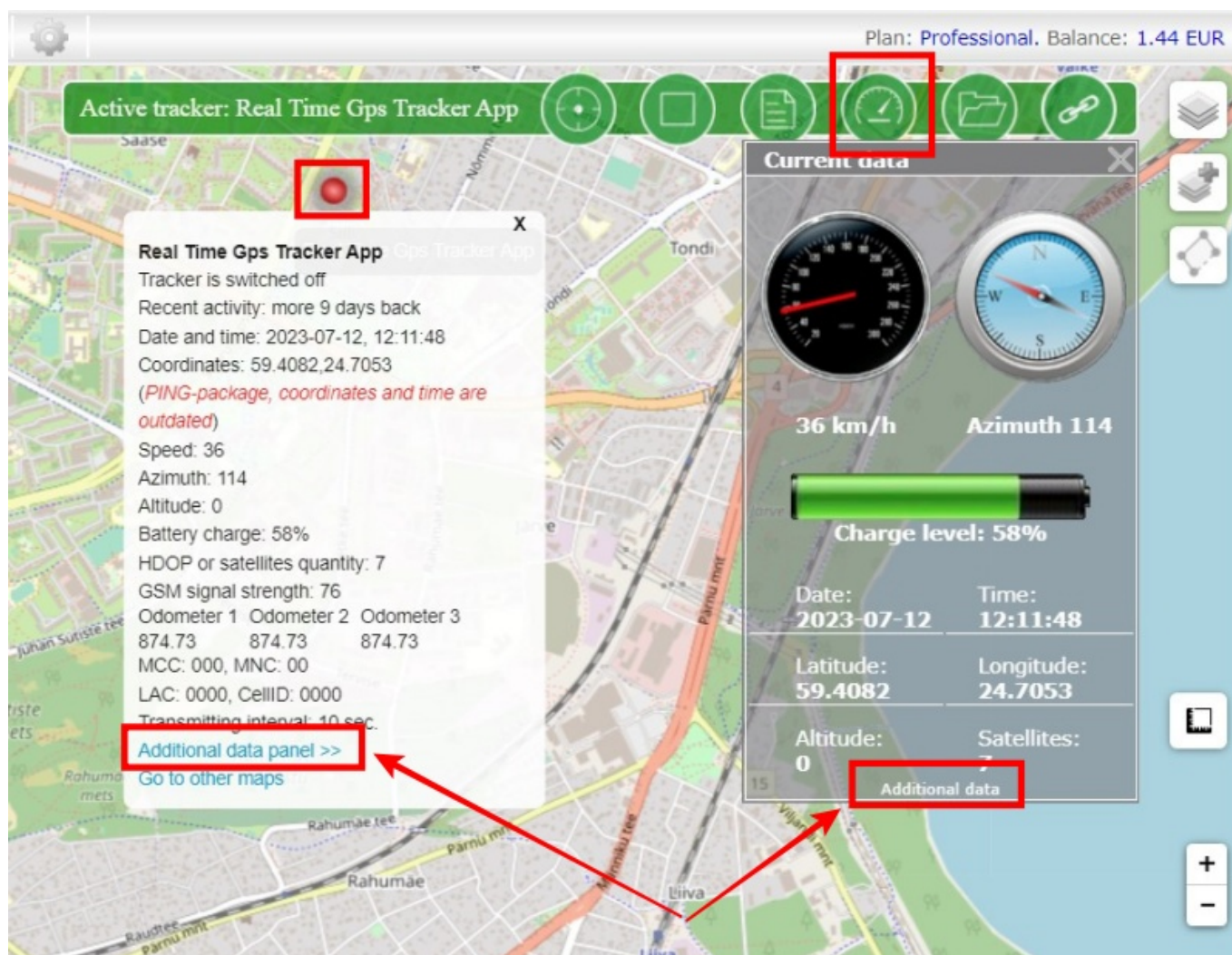
Additional data is data that is not standardized, unique to any model, or is arbitrary user data.

Please note that this data is only available on paid plans.

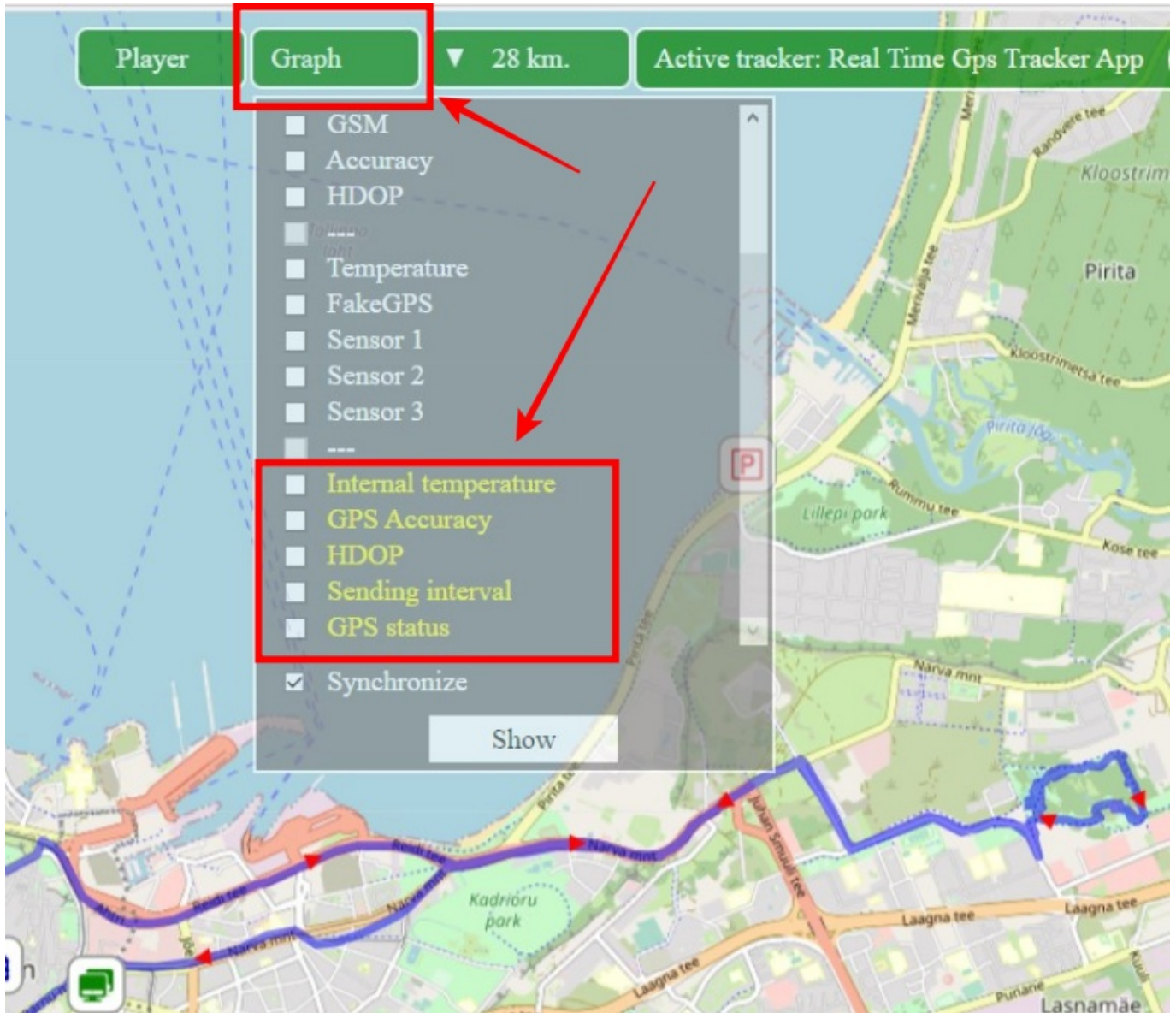
Additional data is displayed in a special additional data panel.

This panel can be opened from two places:

- from the live data panel
- from the window that opens by clicking on the tracker icon



You can build graphs based on this data; in the list of available parameters for plotting, they are highlighted in yellow and are located at the bottom of the list of parameters.



From:
<https://help.livegpstracks.com/> - **LiveGPStracks.com**

Permanent link:
https://help.livegpstracks.com/doku.php?id=additional_data

Last update: **2023/08/10 11:49**

