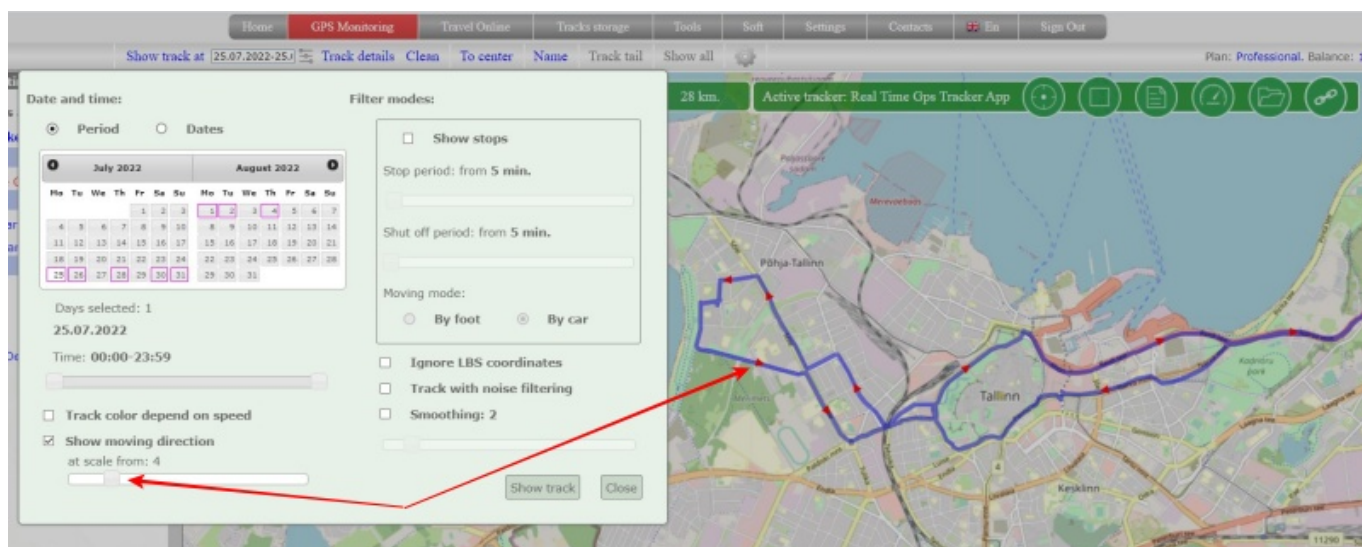


## Select the scale to display the direction

Direction arrows may not look informative at all map scales. Therefore, it is possible to choose from which scale the direction of movement should be shown. To do this, move the slider and select the level that is most suitable for your track.



If you have already loaded a track and want to change the scale at which the direction will be displayed, just open the display settings and move the slider. After selecting the desired value, click

“Close” and the setting will automatically be applied to the already loaded track.

From:

<https://help.livegpstracks.com/> - **LiveGPStracks.com**

Permanent link:

[https://help.livegpstracks.com/doku.php?id=display\\_on\\_the\\_track\\_the\\_direction\\_of\\_movement](https://help.livegpstracks.com/doku.php?id=display_on_the_track_the_direction_of_movement)

Last update: **2023/08/07 13:14**

