

Give a friend access to the tracker

In addition to tracking links and operator links, it is possible to provide access to your trackers to other accounts on livegpstracks.com.

Another user will **be able** to:

- See the tracker in the device panel of your account next to your own trackers
- Watch the movement of the tracker in real time
- View tracks (according to the tariff of the account to which the tracker is connected)
- Set geo-fences and notifications
- Set proximity zones

Another user will **not be able** to:

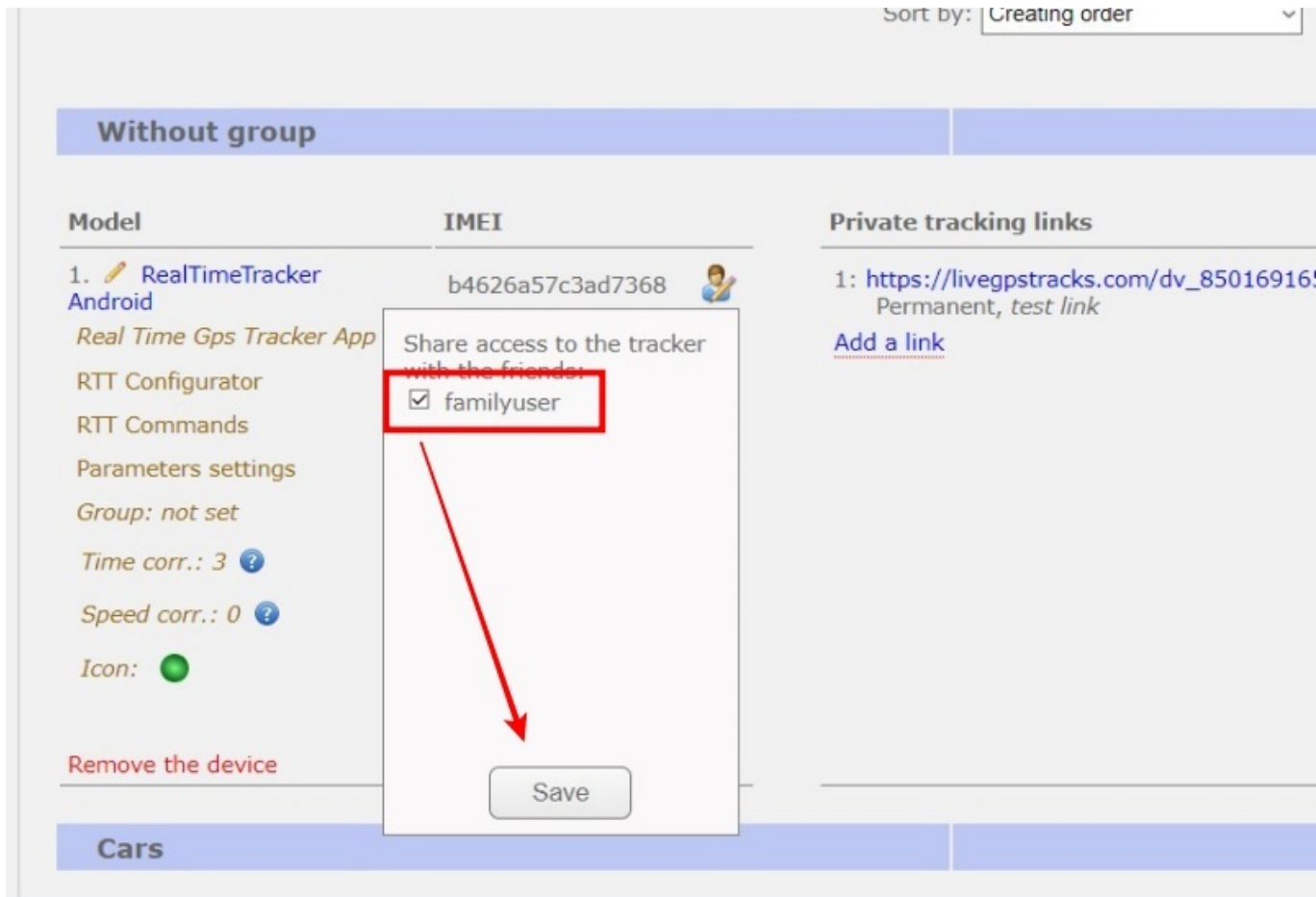
- See the tracker in “Manage trackers” of your account
- Delete or change tracker parameters (name, icon, time zone, etc.)
- See any financial transactions on the tracker (balance replenishment, fee deduction, SMS, etc.)
- Create tracking links and include the tracker in operator links
- Give access to the tracker to your friendly accounts
- Build Reports

To grant access to a friend:

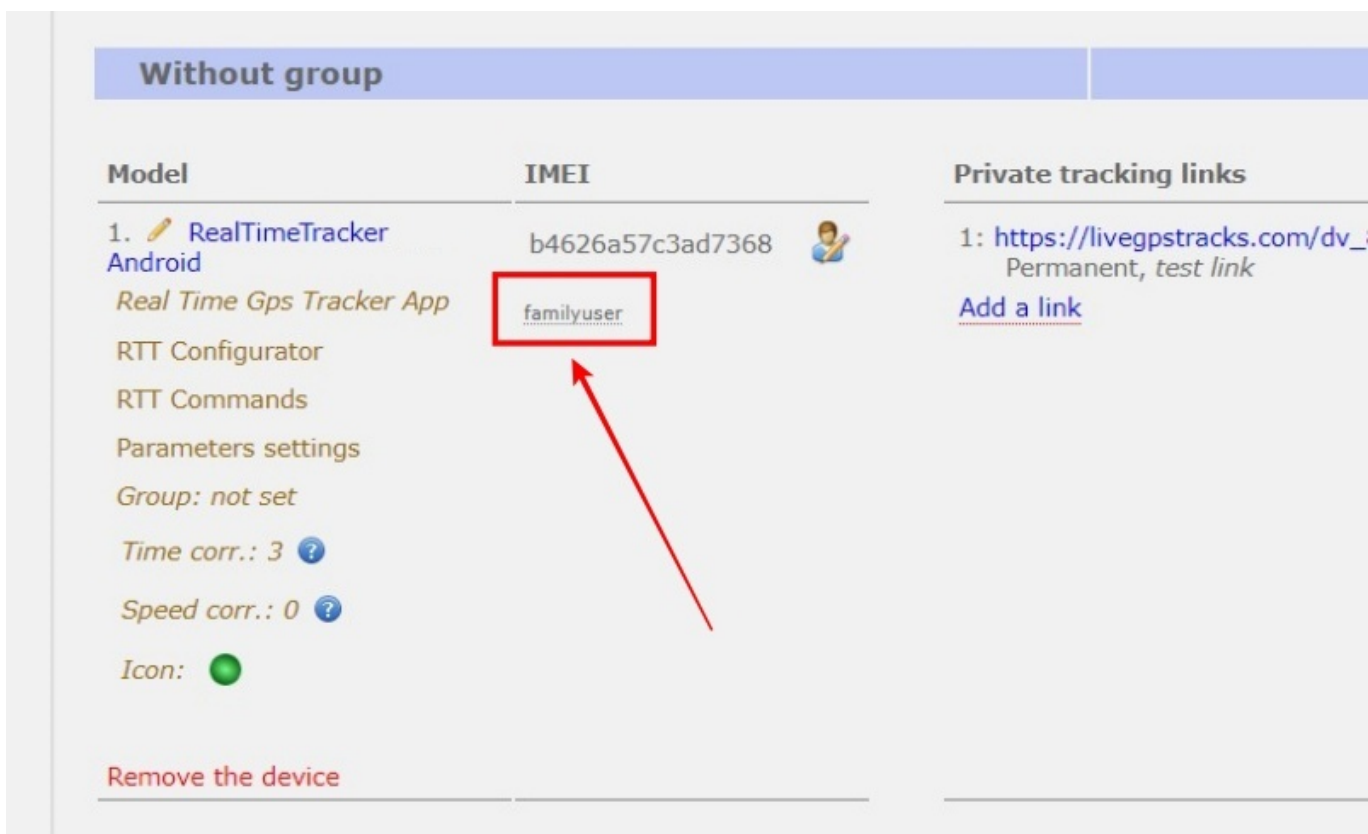
- Add another account as a friend. How to do this can be found in [this article](#).
- Go to the settings of the GPS monitoring section and open the trackers management tab
- Next to each tracker is an icon in the form of a person. Click on it.

The screenshot shows the 'Connected devices (GPS/GSM trackers)' page. At the top, there's a navigation bar with 'Settings' highlighted. Below it, a message says 'Settings for account, trackers, personal details, balance refilling, change of password and other data.' The 'Live GPS Tracking' logo is on the right. A secondary navigation bar includes 'Map', 'Management', 'Log', 'Geofences', 'Reports', 'Finance', 'Plans & Pricing', 'How to connect a tracker', and 'Available models'. Below this, there are links for 'My trackers', 'Operators', 'Fixed objects', 'Trackers owned by others', and 'Settings'. On the right, account info shows 'Plan: Professional' and 'Balance: 1.28 EUR' with a 'Refill' link. The main section is titled 'Connected devices (GPS/GSM trackers)' and has sorting options: 'Sort by: Creating order' and 'Ascending', with an 'Apply' button. Below the sorting is a 'Without group' header and a 'Create a new group' button. The main content is a table with three columns: 'Model', 'IMEI', and 'Private tracking links'. The first row shows a device with model 'RealTimeTracker Android', IMEI 'b4626a57c3ad7368', and a private tracking link. A red box highlights a user icon in the 'Private tracking links' column, with a red arrow pointing to it from below. The table also shows various settings like 'RTT Configurator', 'RTT Commands', 'Parameters settings', 'Group: not set', 'Time corr.: 3', 'Speed corr.: 0', and 'Icon: green'.

- A list of your friends will appear.
Select those friends who will get access to the tracker
- To apply the settings, click the “Save” button



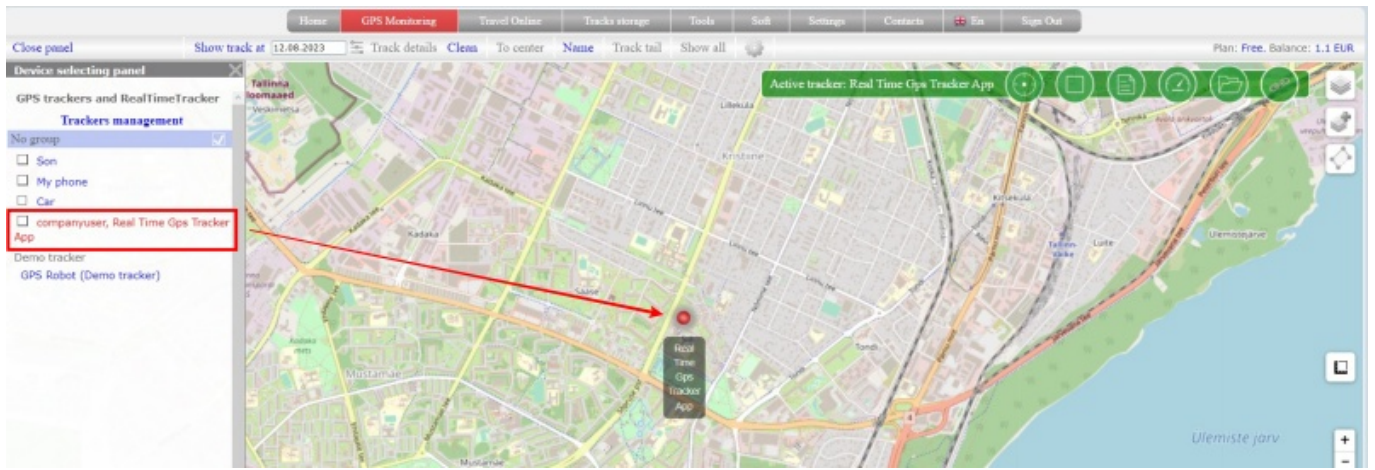
→ All friends who have access to the tracker will appear as a list under the tracker's unique ID.



What the tracker looks like in a friend's account:

Last update:
2023/08/12 17:44

give_a_friend_access_to_the_tracker https://help.livegpstracks.com/doku.php?id=give_a_friend_access_to_the_tracker



From:
<https://help.livegpstracks.com/> - **LiveGPStracks.com**

Permanent link:
https://help.livegpstracks.com/doku.php?id=give_a_friend_access_to_the_tracker

Last update: **2023/08/12 17:44**

