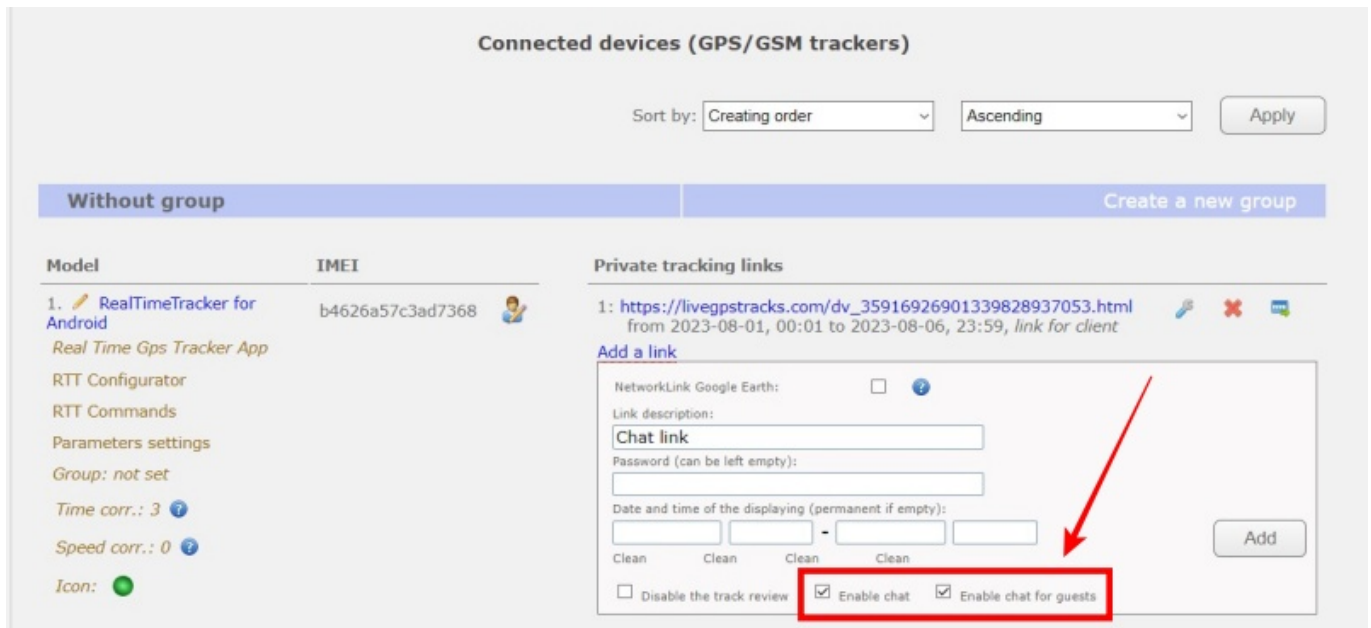


Chat

The chat is tied to a specific link ([what is a link](#)) or operator ([what is an operator](#)).

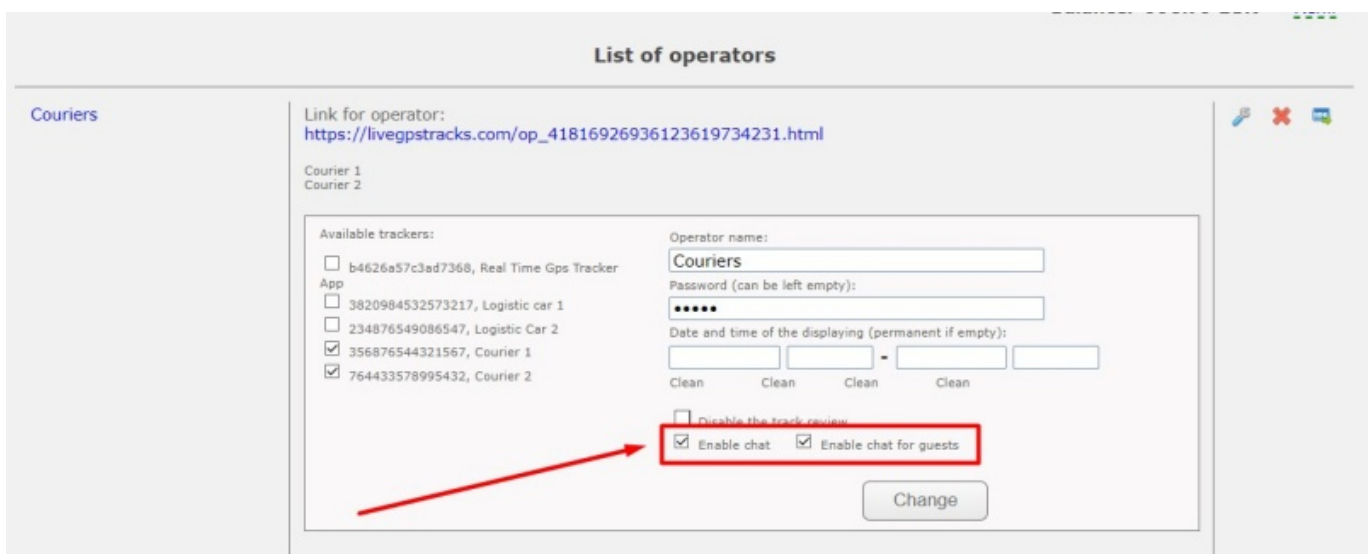
1. Create a tracking link for the tracker and specify whether chat is possible in the creation parameters. To do this, you need to set the **“Enable chat”** setting

Chat can be enabled both for users authorized on livegpstracks.com, and for any visitors who came through the created link. To allow chat to unauthorized users, enable the setting **“Enable chat to guests”**



The screenshot shows the 'Connected devices (GPS/GSM trackers)' interface. On the left, there's a sidebar with options like 'Without group', 'Create a new group', 'Model', 'IMEI', 'Private tracking links', 'Add a link', 'NetworkLink Google Earth', 'Link description', 'Password', 'Date and time of the displaying', 'Clean', 'Disable the track review', 'Enable chat', and 'Enable chat for guests'. The 'Add a link' form is open, and the 'Enable chat' and 'Enable chat for guests' checkboxes are checked. A red arrow points to the 'Add' button.

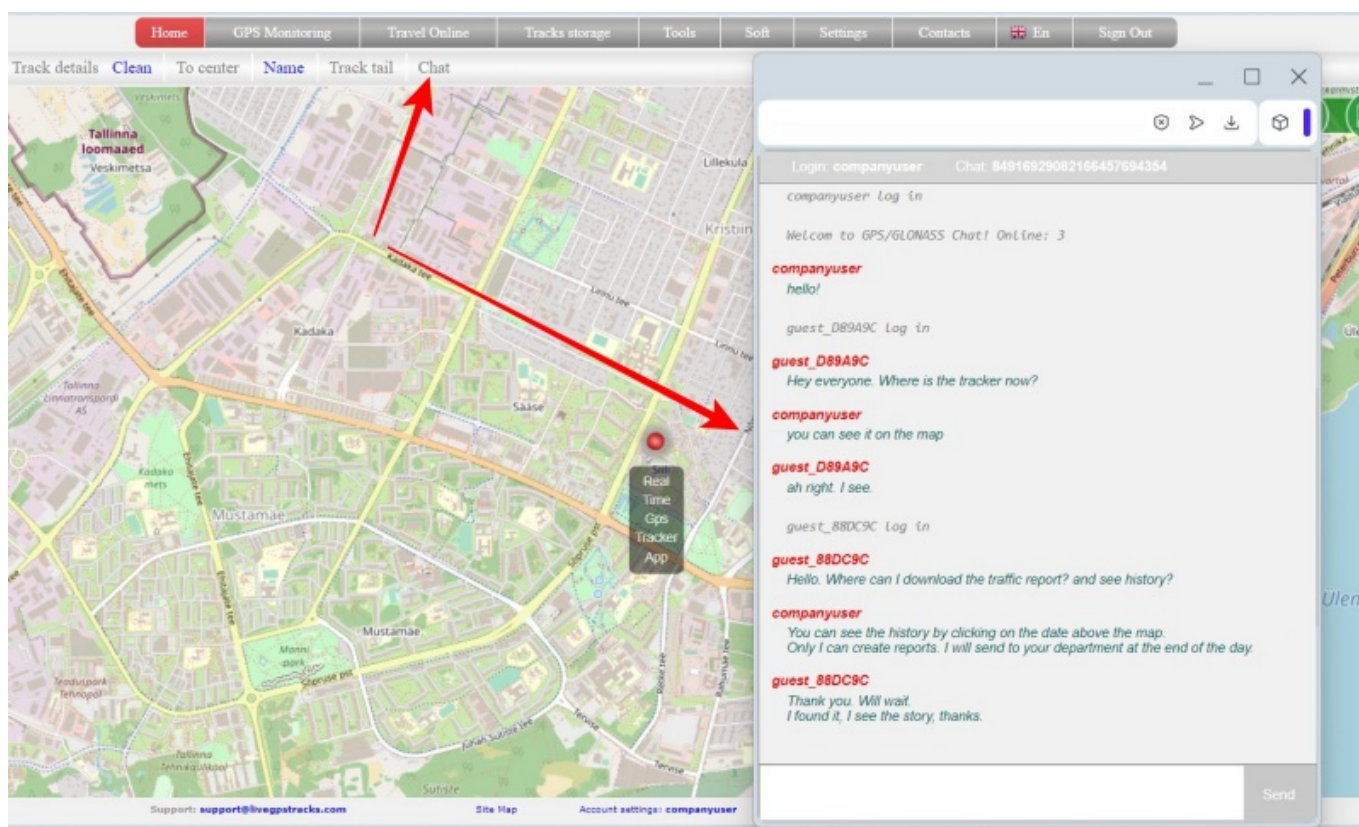
2. In operator mode, chat is enabled in the same way



The screenshot shows the 'List of operators' interface. On the left, there's a sidebar with options like 'Couriers', 'Link for operator', 'Available trackers', 'Operator name', 'Password', 'Date and time of the displaying', 'Clean', 'Disable the track review', 'Enable chat', and 'Enable chat for guests'. The 'Change' form is open, and the 'Enable chat' and 'Enable chat for guests' checkboxes are checked. A red arrow points to the 'Change' button.

You can enable chat either when creating a new link/operator, or by editing an already created one.

What chatting looks like:



In what cases might this be needed?

- You went on a trip, created a temporary link and sent it to your friends (or posted it on the forum) so they can watch you. With chat, everyone will be more comfortable and more fun.
- Team competition? Create an operator and let all the viewers not only watch the movements of the participants, but also communicate!

Please note that chats are available in link mode (on the “Simple” plan) and in operator mode (on the “Professional” plan).

From:

<https://help.livegpstracks.com/> - **LiveGPTracks.com**

Permanent link:

<https://help.livegpstracks.com/doku.php?id=chat>

Last update: **2023/08/24 23:39**

