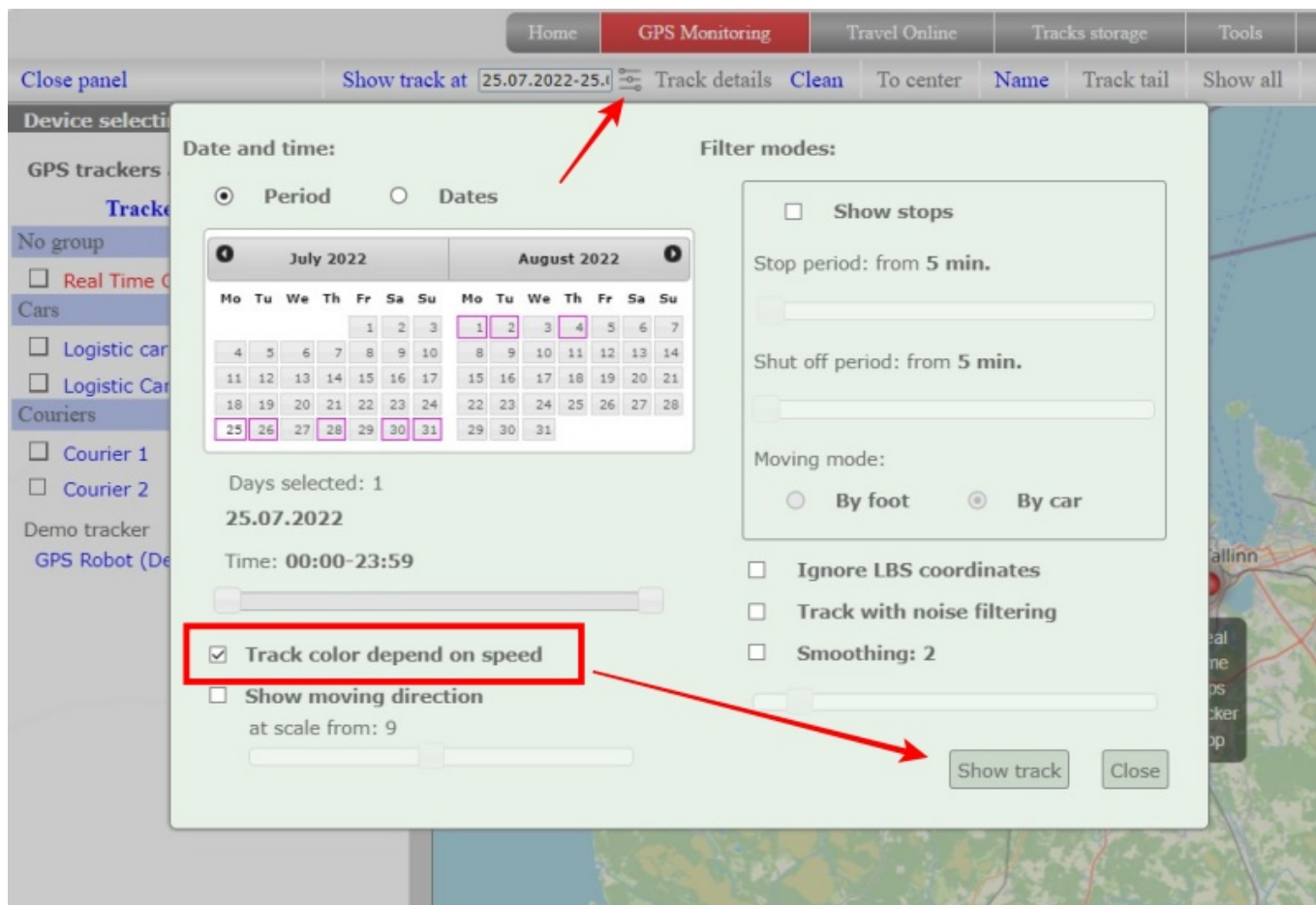


Display track in different colors depending on the speed

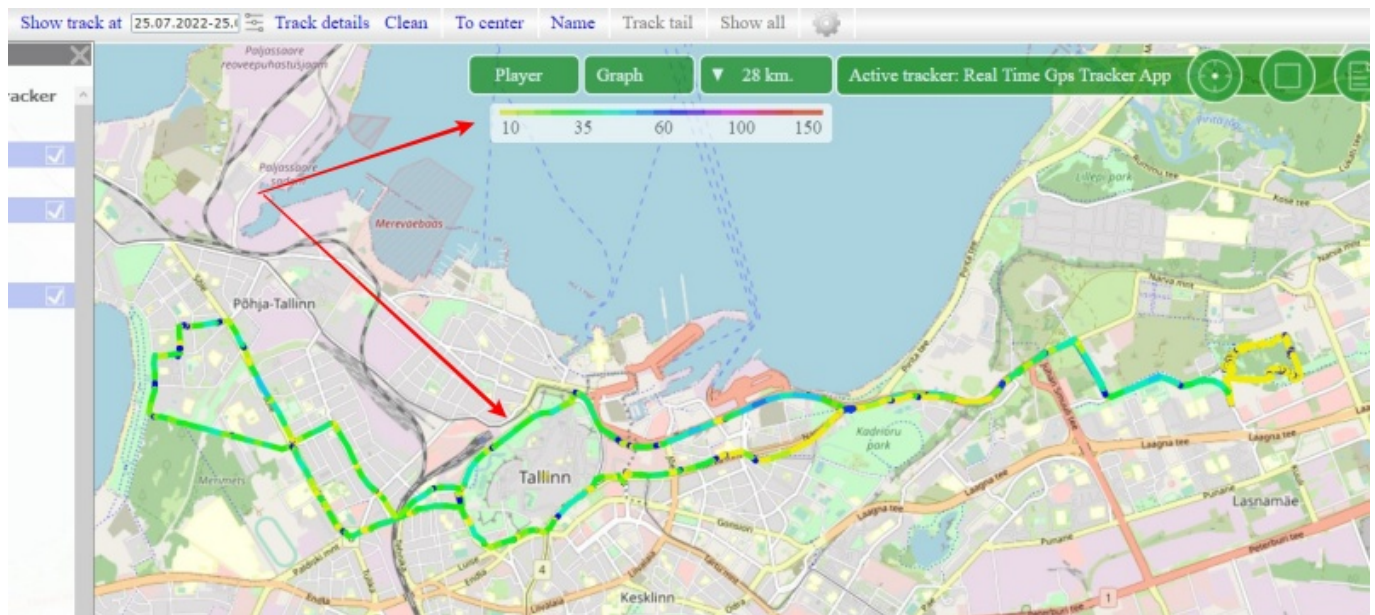
Click on the icon next to the date field.

Activate the setting **“Track color depend on speed”**

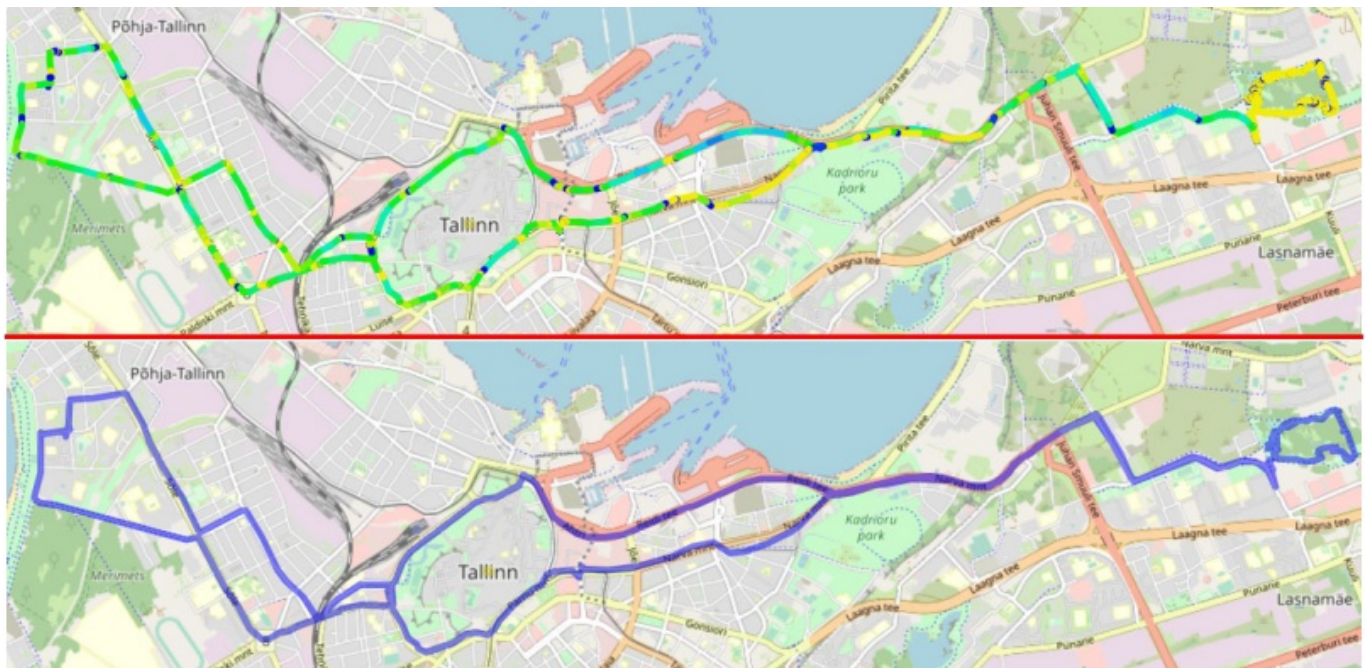
Select a date and click the **“Show track”** button



Depending on the speed, the track will be displayed with a different color indication. An information scale will also appear on the map, showing which color corresponds to a certain speed.



What the same track looks like with and without speed:



From:
<https://help.livegpstracks.com/> - LiveGPTracks.com

Permanent link:
https://help.livegpstracks.com/doku.php?id=display_track_in_different_colors

Last update: 2023/08/07 12:48

