

Fixed objects

The option is available on plan: "Professional".

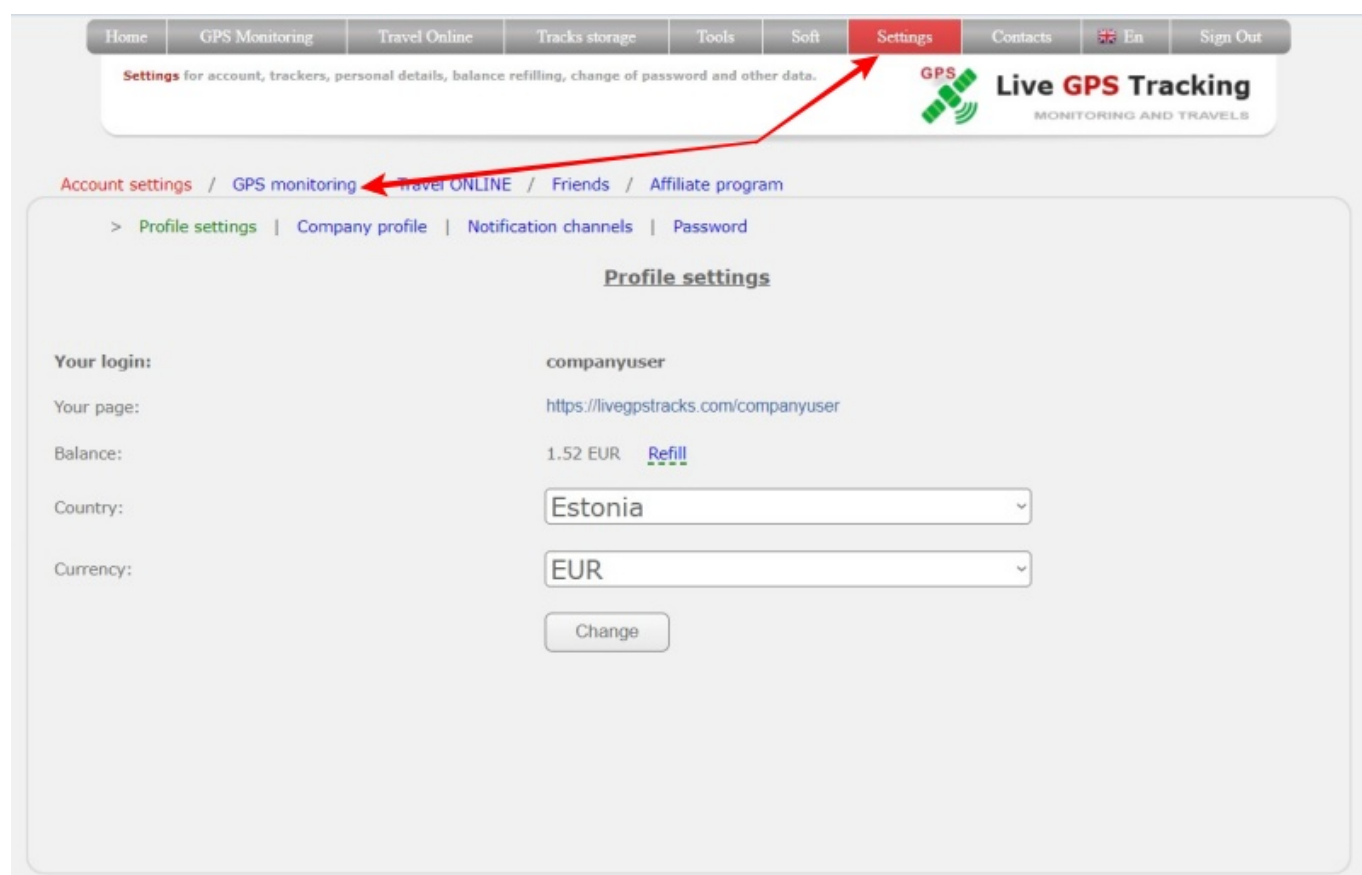
What is "fixed objects"

Fixed objects are special points or marks installed on the map.

With the help of such objects, it is possible to mark important places, for example, which the tracked trackers should visit, as well as using proximity zones to find out at what time the tracker was near the marked place or approached at the moment.

Fixed objects settings

→ Top menu - Settings - tab **"GPS Monitoring"**



→ Management - tab **"Fixed objects"**

Home | GPS Monitoring | Travel Online | Tracks storage | Tools | Soft | **Settings** | Contacts | En | Sign Out

Settings for account, trackers, personal details, balance refilling, change of password and other data.

GPS Live GPS Tracking
MONITORING AND TRAVELS

<<< Map | Management | Log | Geofences | Reports | Finance | Plans & Pricing | How to connect a tracker | Available models

> My trackers | Operators | **Fixed objects** | Trackers owned by others | Settings

Plan: **Professional**
Balance: 1.52 EUR [Refill](#)

Fixed objects

No fixed objects added

Add a new object

Object name For all trackers Maps + geofences Coordinates ...

How to create objects?

In the “**Add new object**” block, fill in the fields:

→ **Object name** - enter any name

→ **For all trackers** - an object can be created both for all trackers and for a specific one. If an object is linked to a specific tracker, then it will be displayed on the map only if the linked tracker is active.

→ **Object type:**

- **Maps+geofences** - the object will be displayed on the map. It will be possible to create proximity zones on it
- **Only on the map** - the object will be displayed on the map. It will not be possible to create proximity zones on it
- **Only for geofences** - the object will not be displayed on the map. It will be possible to create proximity zones on it


→ **Coordinates** - click on the input field, or on the “...” button located to the right of the field. In the window that appears, mark a point on the map.

→ **Object icon** - click on the button with the picture. In the window that opens, select an image and its color.

→ After filling in all the fields, click the “**Create**” button

[Home](#) | [GPS Monitoring](#) | [Travel Online](#) | [Tracks storage](#) | [Tools](#) | [Soft](#) | **Settings** | [Contacts](#) | [En](#) | [Sign Out](#)

Settings for account, trackers, personal details, balance refilling, change of password and other data.

 **Live GPS Tracking**
MONITORING AND TRAVELS

<<< [Map](#) | [Management](#) | [Log](#) | [Geofences](#) | [Reports](#) | [Finance](#) | [Plans & Pricing](#) | [How to connect a tracker](#) | [Available models](#)


> [My trackers](#) | [Operators](#) | **Fixed objects** | [Trackers owned by others](#) | [Settings](#)

Plan: **Professional**
Balance: 1.52 EUR [Refill](#)

Fixed objects

No fixed objects added


Add a new object

... 

Select coordinates

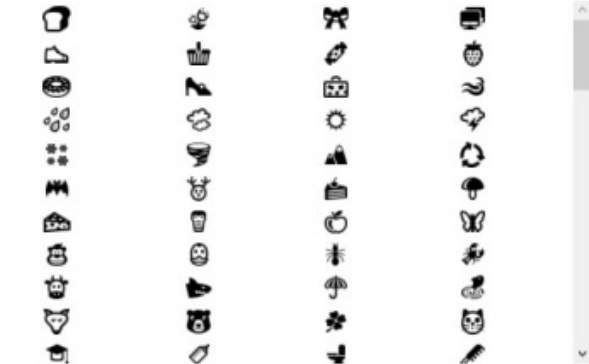
Enter coordinates

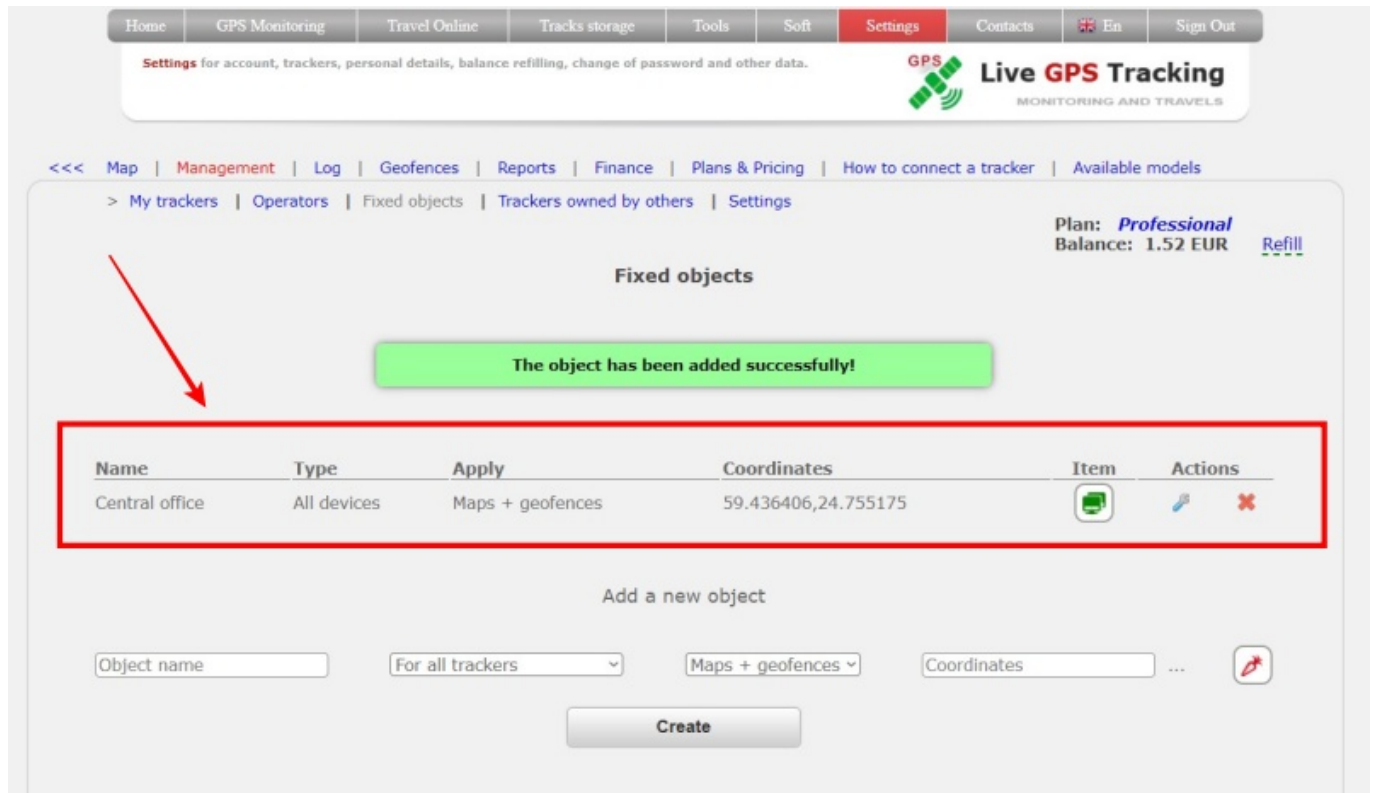
or create (move) a point by double-clicking



Select Icon

☐ black ☐ red ☐ blue ☒ green





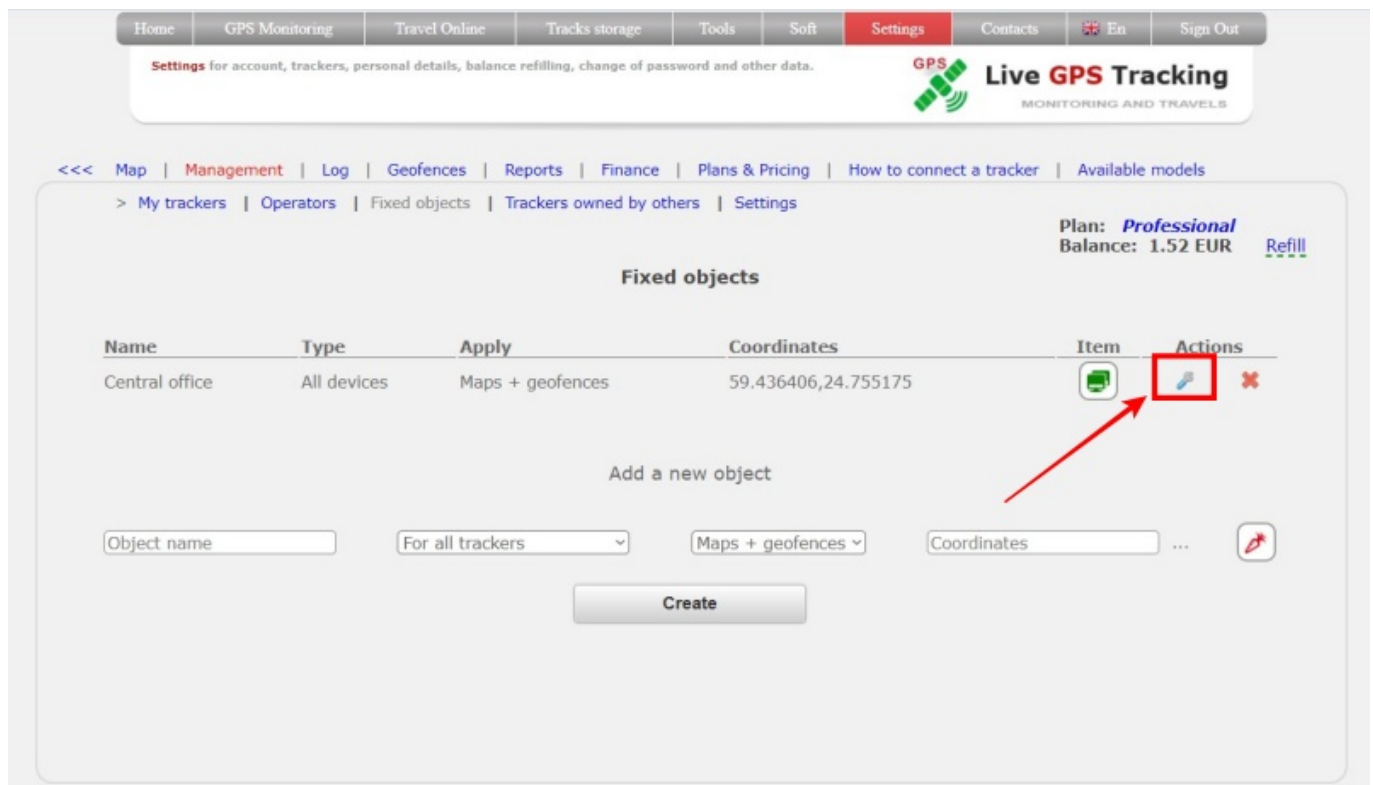
The screenshot shows the 'Fixed objects' page in the Live GPS Tracking interface. At the top, there's a navigation bar with links like Home, GPS Monitoring, Travel Online, Tracks storage, Tools, Soft, Settings (highlighted), Contacts, En, and Sign Out. Below the navigation bar, a message states: 'Settings for account, trackers, personal details, balance refilling, change of password and other data.' The main header area includes the 'Live GPS Tracking' logo and 'MONITORING AND TRAVELS' text. A secondary navigation bar contains links: <<< Map | Management | Log | Geofences | Reports | Finance | Plans & Pricing | How to connect a tracker | Available models. Below this, a breadcrumb trail reads: > My trackers | Operators | Fixed objects | Trackers owned by others | Settings. On the right, the user's plan is 'Professional' with a balance of '1.52 EUR' and a 'Refill' link. The main content area is titled 'Fixed objects' and features a green success message: 'The object has been added successfully!'. Below this is a table with the following data:

Name	Type	Apply	Coordinates	Item	Actions
Central office	All devices	Maps + geofences	59.436406,24.755175		

Below the table, there's a section 'Add a new object' with input fields for 'Object name', 'For all trackers' (dropdown), 'Maps + geofences' (dropdown), 'Coordinates', and a 'Create' button. A red arrow points to the 'Fixed objects' title.

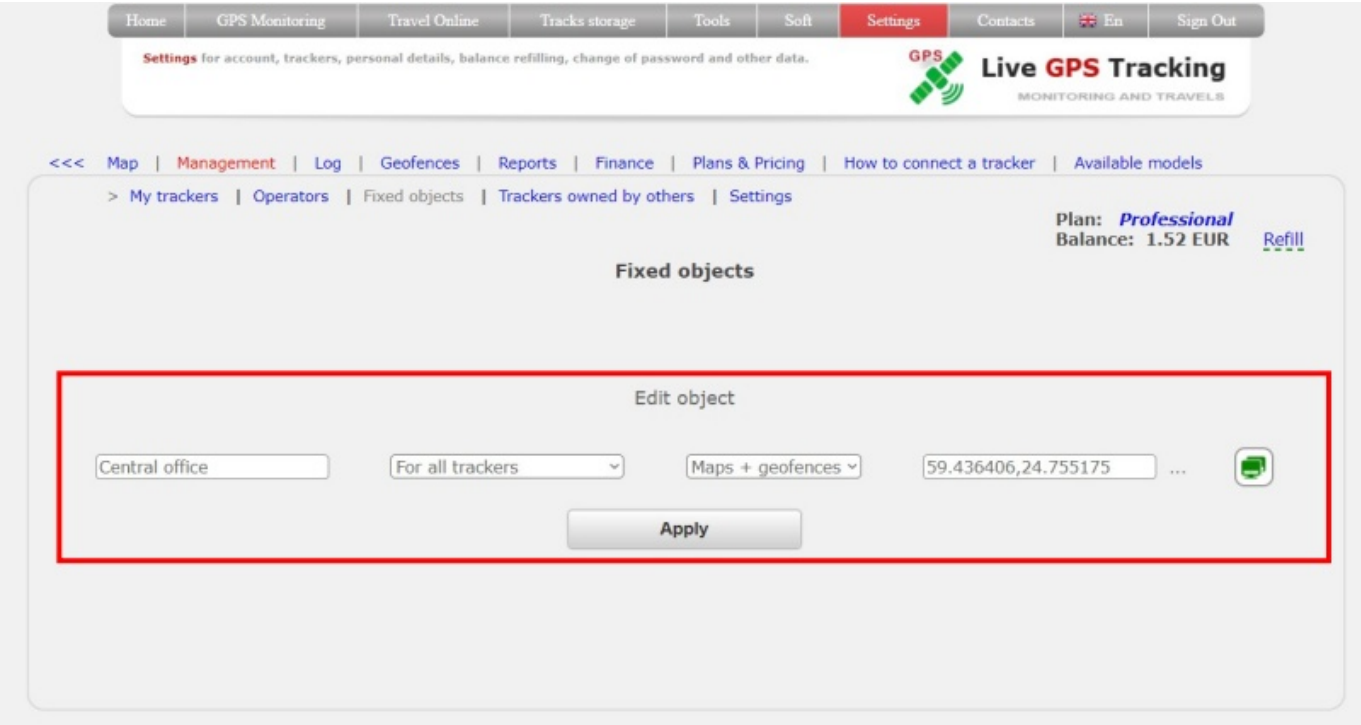
How to edit an object?

→ In the object line, click on the “wrench” icon.



This screenshot shows the same 'Fixed objects' page as the previous one, but with a red box highlighting the wrench icon in the 'Actions' column of the table. A red arrow points to this icon, indicating the next step in the process. The rest of the page layout, including the navigation bars and the 'Add a new object' section, remains the same.

→ Edit the required fields and click the “Apply” button



How to delete an object?

- In the object line, click on the “cross” icon.
- Confirm the deletion and the object will be deleted.

Displaying fixed objects on the map

For example, let's create 4 objects of different types and applications.

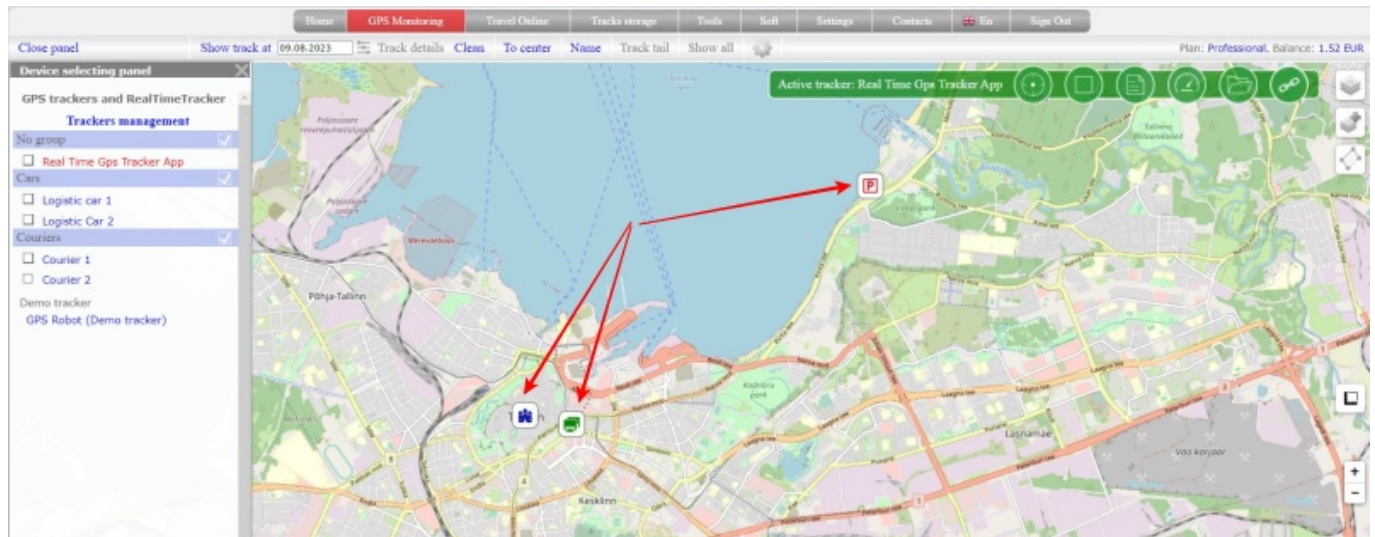
Fixed objects					
Name	Type	Apply	Coordinates	Item	Actions
Central office	All devices	Maps + geofences	59.436406,24.755175		
Object only for map	All devices	Only on map	59.437408,24.745157		
Onli for tracker	Tracker "Real Time Gps Tracker App"	Maps + geofences	59.462222,24.818819		
Only for geozones	All devices	Only for geofences	59.395049,24.668322		

Let's go to the map.

Only 3 objects are displayed on the map. This happened because one of the features was set to “Only for geofences”. At the moment, the “Real Time Gps Tracker App” device is selected as active. On the map you can see the object with the icon “P” (object only for this tracker). If you switch to any other device list object, the “P” object will no longer be displayed.

The other two objects are available to all trackers and will always be displayed on the map.

Click on the object and a window with the name will be displayed.



How to set the approach zone on the created object?

The process of creating a approach zone for a stationary object is no different from creating zones for trackers.

It should be noted that stationary objects can only be used as central objects.

The list displays only objects with types "Maps+geofences" and "Only for geofences".

What are approach zones and how to work with them can be found in this article.

From:

<https://help.livegpstracks.com/> - **LiveGPSTracks.com**

Permanent link:

https://help.livegpstracks.com/doku.php?id=fixed_objects

Last update: **2023/08/09 12:20**

