

Give a friend access to the tracker

In addition to tracking links and operator links, it is possible to provide access to your trackers to other accounts on livegpstracks.com.

Another user will **be able** to:

- See the tracker in the device panel of your account next to your own trackers
- Watch the movement of the tracker in real time
- View tracks (according to the tariff of the account to which the tracker is connected)
- Set geo-fences and notifications
- Set proximity zones

Another user will **not be able** to:

- See the tracker in “Manage trackers” of your account
- Delete or change tracker parameters (name, icon, time zone, etc.)
- See any financial transactions on the tracker (balance replenishment, fee deduction, SMS, etc.)
- Create tracking links and include the tracker in operator links
- Give access to the tracker to your friendly accounts
- Build Reports

To grant access to a friend:

- Add another account as a friend. How to do this can be found in [this article](#).
- Go to the settings of the GPS monitoring section and open the trackers management tab
- Next to each tracker is an icon in the form of a person. Click on it.

The screenshot shows the 'Live GPS Tracking' web interface. At the top, there's a navigation bar with links like Home, GPS Monitoring, Travel Online, Tracks storage, Tools, Soft, Settings (highlighted), Contacts, En, and Sign Out. Below this is a sub-header for 'Settings' for account, trackers, personal details, balance refilling, change of password and other data. The main content area is titled 'Connected devices (GPS/GSM trackers)'. It includes a 'Sort by' dropdown set to 'Creating order' and an 'Ascending' dropdown, with an 'Apply' button. Below this is a table with columns: Model, IMEI, and Private tracking links. The first row shows a device named 'RealTimeTracker' (Android) with IMEI 'b4626a57c3ad7368'. The 'Private tracking links' column for this device shows a link: '1: https://livegpstracks.com/dv_85016916556395307927460.html' with a note 'Permanent, test link' and an 'Add a link' button. A red box highlights a user icon in the 'Private tracking links' column, and a red arrow points to it from below.

Model	IMEI	Private tracking links
1. RealTimeTracker Android Real Time Gps Tracker App RTT Configurator RTT Commands Parameters settings Group: not set Time corr.: 3 Speed corr.: 0 Icon:	b4626a57c3ad7368	1: https://livegpstracks.com/dv_85016916556395307927460.html Permanent, test link Add a link

- A list of your friends will appear.
Select those friends who will get access to the tracker
- To apply the settings, click the "Save" button

Sort by: Creating order

Without group

Model	IMEI	Private tracking links
1. RealTimeTracker Android <i>Real Time Gps Tracker App</i> RTT Configurator RTT Commands Parameters settings Group: not set Time corr.: 3 Speed corr.: 0 Icon:	b4626a57c3ad7368 <div>Share access to the tracker with the friends: <input checked="" type="checkbox"/> familyuser </div> <div>Save</div>	1: https://livegpstracks.com/dv_85016916/ Permanent, test link Add a link

Remove the device

Cars

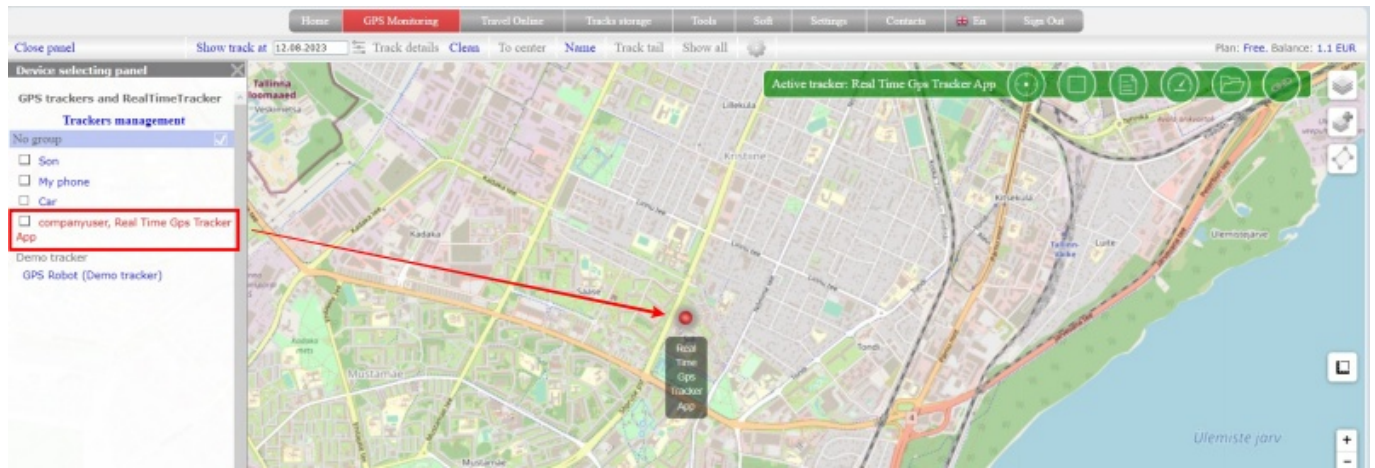
→ All friends who have access to the tracker will appear as a list under the tracker's unique ID.

Without group

Model	IMEI	Private tracking links
1. RealTimeTracker Android <i>Real Time Gps Tracker App</i> RTT Configurator RTT Commands Parameters settings Group: not set Time corr.: 3 Speed corr.: 0 Icon:	b4626a57c3ad7368 <div><u>familyuser</u> </div>	1: https://livegpstracks.com/dv_85016916/ Permanent, test link Add a link

Remove the device

What the tracker looks like in a friend's account:



From:

<https://help.livegpstracks.com/> - **LiveGPSTracks.com**

Permanent link:

https://help.livegpstracks.com/doku.php?id=give_a_friend_access_to_the_tracker

Last update: **2023/08/12 17:44**

