

## How to connect or change the plan

- Goto to main page <https://livegpstracks.com> website
- You will see your account information in the top right corner of the main page (if you signed in)
- Press on the plan name

The screenshot shows the LiveGPS Tracking website dashboard. At the top, there is a navigation bar with links: Home, GPS Monitoring, Travel Online, Tracks storage, Tools, Soft, Settings, Contacts, En (with a flag icon), and Sign Out. Below the navigation bar, a welcome message states: "Welcome! Our service combines not only traditional GPS monitoring of transport, employees, relatives, pets but wonderful world of trips and travels that you can share in the real time." The LiveGPS Tracking logo is also present. In the center, user information is displayed: "Your login: [familyuser](#), Your plan: [Free](#), Your balance: [0 EUR](#)". A red arrow points to the "Free" plan name. Below this, there are two main sections: "Travel ONLINE" and "GPS tracks storage". The "Travel ONLINE" section describes the service for exploring the world and keeping a travel diary, listing five benefits with green checkmarks: launching the app, recording travels, offline mode, taking photos/notes, and sharing impressions. It also states the service is free of charge. The "GPS tracks storage" section describes storing trips and downloading them to navigation apps, noting that tracks are stored indefinitely. A progress bar at the bottom shows the first step is completed.

- You will see available plans and some information

Home | GPS Monitoring | Travel Online | Tracks storage | Tools | Soft | **Settings** | Contacts | En | Sign Out

Settings for account, trackers, personal details, balance refilling, change of password and other data.

Live GPS Tracking  
MONITORING AND TRAVELS

<<< Map | Management | Log | Geofences | Reports | Finance | **Plans & Pricing** | How to connect a tracker | Available models

Plan: **Free**  
Balance: 0 EUR [Refill](#)

### Changing your tariff

Your current tariff: "Free", cost: 0 EUR/month  
Brief description of tariff: "Free rate with some restrictions."  
A full list of options is available [in the detailed tariff description](#)

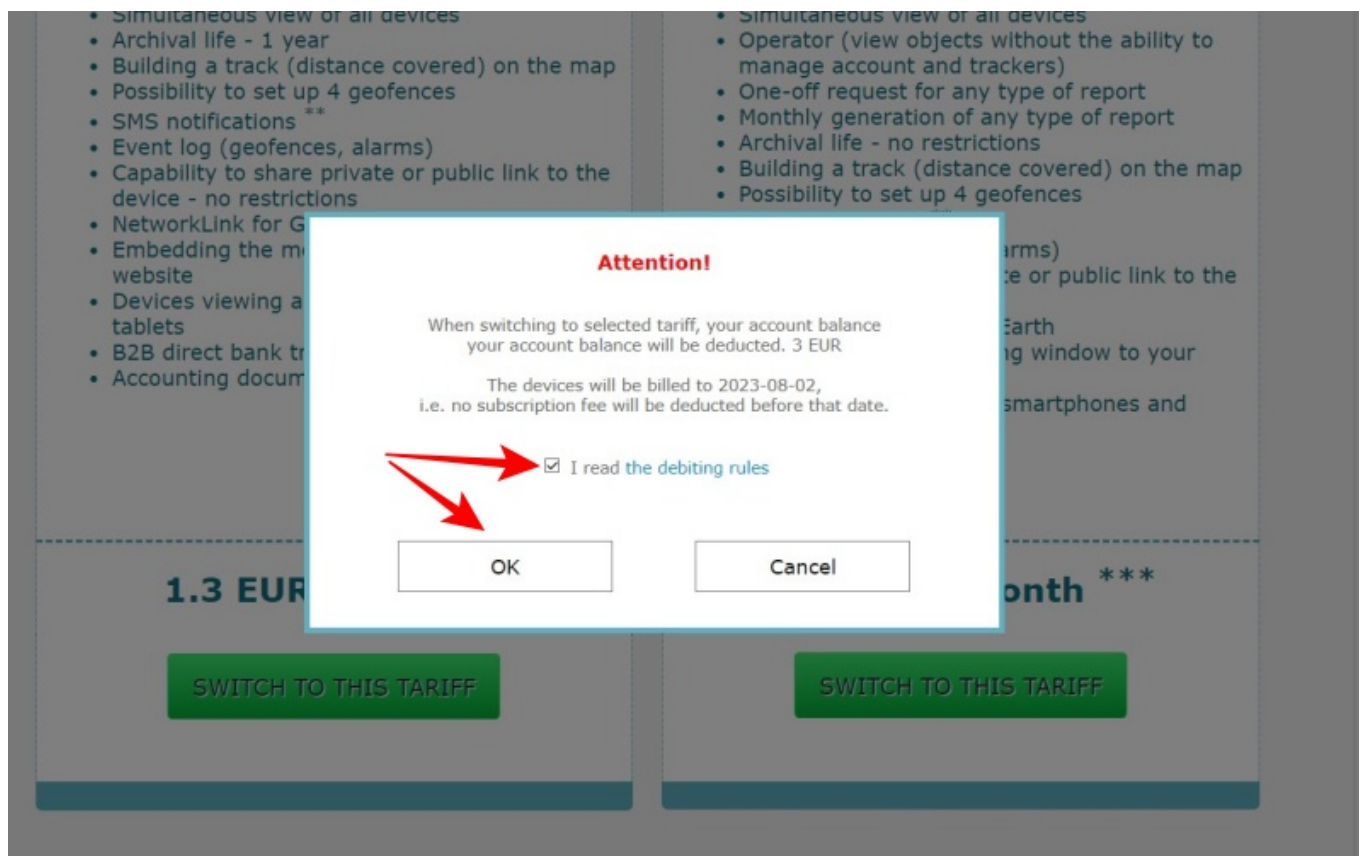
You can switch to\* to any of our existing plans:

Simple	Professional
The tariff allows you to connect an unlimited number of trackers.	The tariff allows you to connect an unlimited number of trackers.
<ul style="list-style-type: none"><li>• More than <a href="#">800 tracker models</a></li><li>• Possibility to connect 1 free test tracker</li><li>• Several types of maps</li><li>• Simultaneous view of all devices</li><li>• Archival life - 1 year</li><li>• Building a track (distance covered) on the map</li><li>• Possibility to set up 4 geofences</li><li>• SMS notifications **</li><li>• Event log (geofences, alarms)</li></ul>	<ul style="list-style-type: none"><li>• More than <a href="#">800 tracker models</a></li><li>• Possibility to connect 1 free test tracker</li><li>• Several types of maps</li><li>• Simultaneous view of all devices</li><li>• Operator (view objects without the ability to manage account and trackers)</li><li>• One-off request for any type of report</li><li>• Monthly generation of any type of report</li><li>• Archival life - no restrictions</li><li>• Building a track (distance covered) on the map</li></ul>

→ There is a **"Switch to this tariff"** button, press on the button under the plan you want to select.

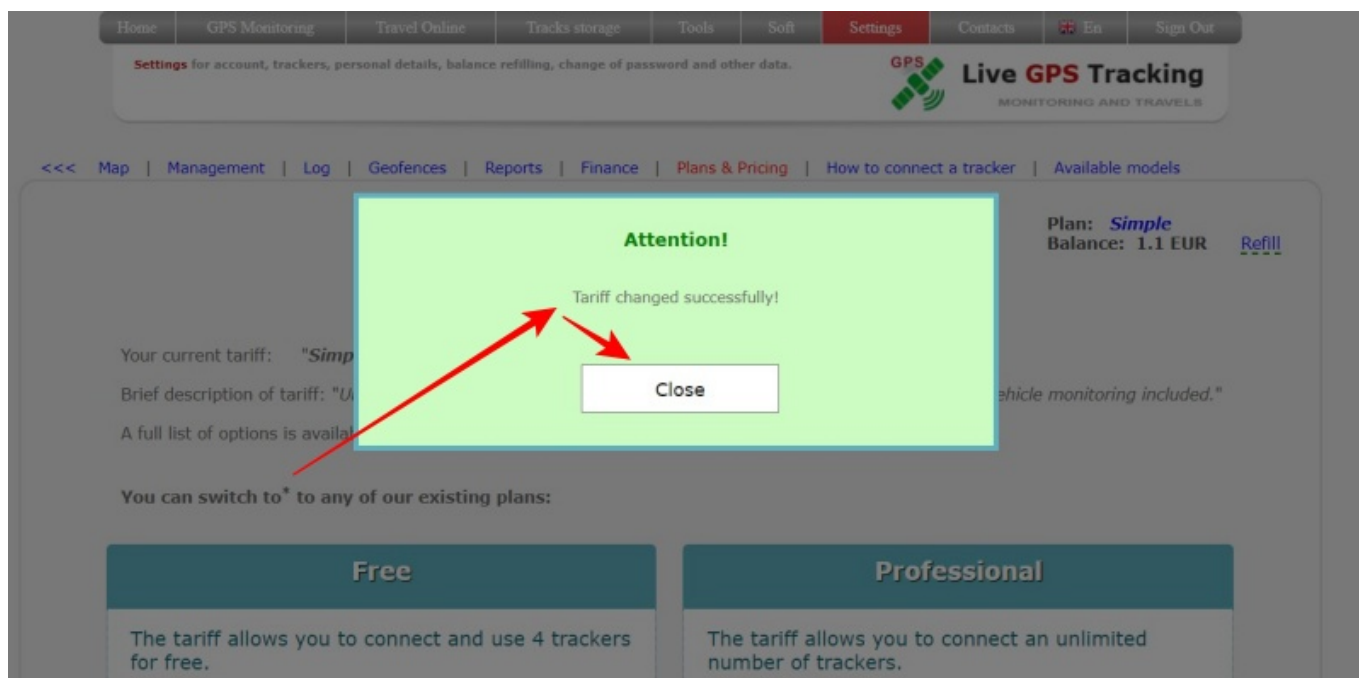
Simple	information	Professional
The tariff allows you to connect an unlimited number of trackers.		The tariff allows you to connect an unlimited number of trackers.
<ul style="list-style-type: none"><li>• More than <a href="#">800 tracker models</a></li><li>• Possibility to connect 1 free test tracker</li><li>• Several types of maps</li><li>• Simultaneous view of all devices</li><li>• Archival life - 1 year</li><li>• Building a track (distance covered) on the map</li><li>• Possibility to set up 4 geofences</li><li>• SMS notifications **</li><li>• Event log (geofences, alarms)</li><li>• Capability to share private or public link to the device - no restrictions</li><li>• NetworkLink for Google Earth</li><li>• Embedding the monitoring window to your website</li><li>• Devices viewing app for smartphones and tablets</li><li>• B2B direct bank transfer</li><li>• Accounting documents</li></ul>		<ul style="list-style-type: none"><li>• More than <a href="#">800 tracker models</a></li><li>• Possibility to connect 1 free test tracker</li><li>• Several types of maps</li><li>• Simultaneous view of all devices</li><li>• Operator (view objects without the ability to manage account and trackers)</li><li>• One-off request for any type of report</li><li>• Monthly generation of any type of report</li><li>• Archival life - no restrictions</li><li>• Building a track (distance covered) on the map</li><li>• Possibility to set up 4 geofences</li><li>• SMS notifications **</li><li>• Event log (geofences, alarms)</li><li>• Capability to share private or public link to the device - no restrictions</li><li>• NetworkLink for Google Earth</li><li>• Embedding the monitoring window to your website</li><li>• Devices viewing app for smartphones and tablets</li><li>• B2B direct bank transfer</li><li>• Accounting documents</li></ul>
<b>1.3 EUR/month ***</b>		<b>2.5 EUR/month ***</b>
<b>SWITCH TO THIS TARIFF</b>		<b>SWITCH TO THIS TARIFF</b>

- Read and accept the debiting rules
- Press OK button to change your plan

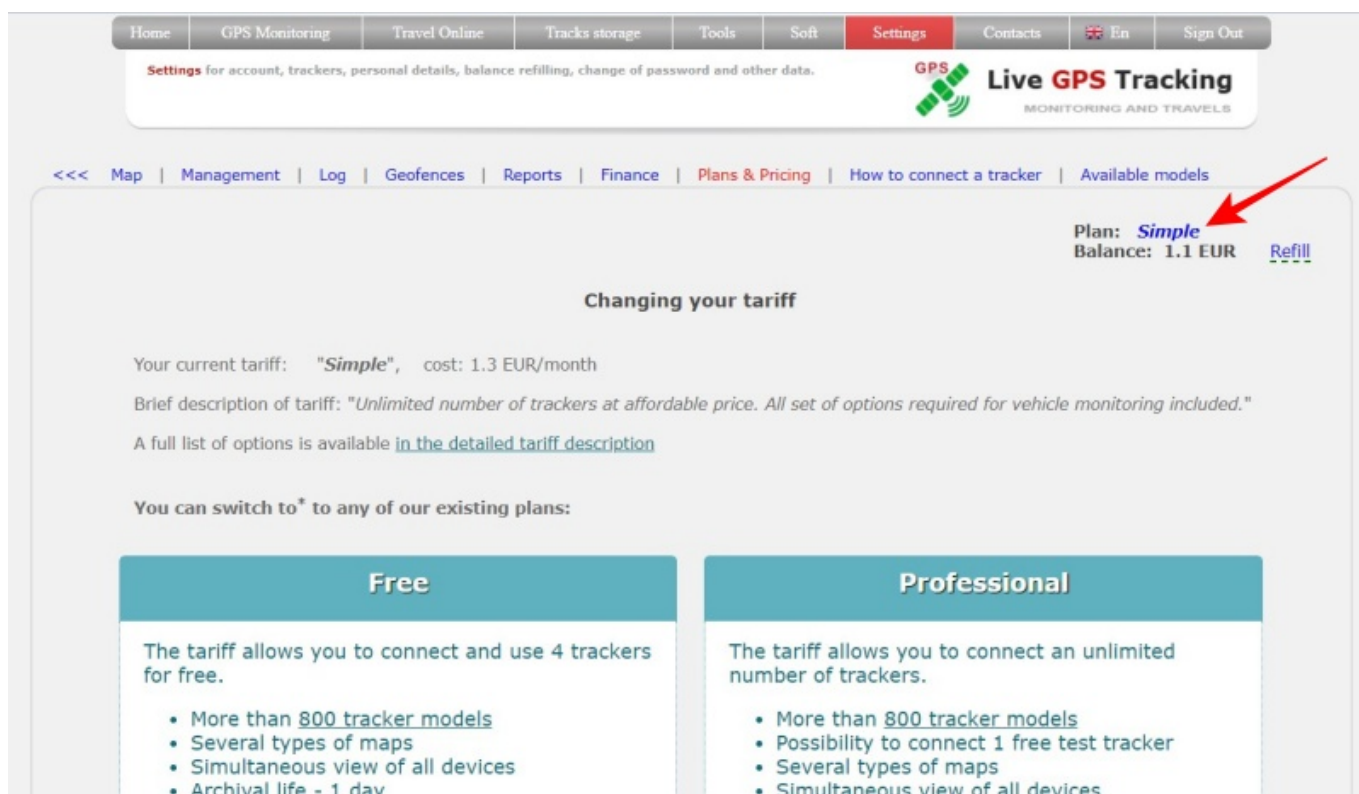


Please read the information in the dialogue very carefully. If you do not have enough funds for the balance or other limits, the reason will be written in the dialog.

If the tariff plan has been changed, you will see the dialog below. Click the **“Close”** button



Check that the name of your tariff plan has changed.



From:  
<https://help.livegpstracks.com/> - LiveGPSTracks.com

Permanent link:  
[https://help.livegpstracks.com/doku.php?id=how\\_to\\_connect\\_or\\_change\\_the\\_plan](https://help.livegpstracks.com/doku.php?id=how_to_connect_or_change_the_plan)

Last update: 2023/07/02 18:40

