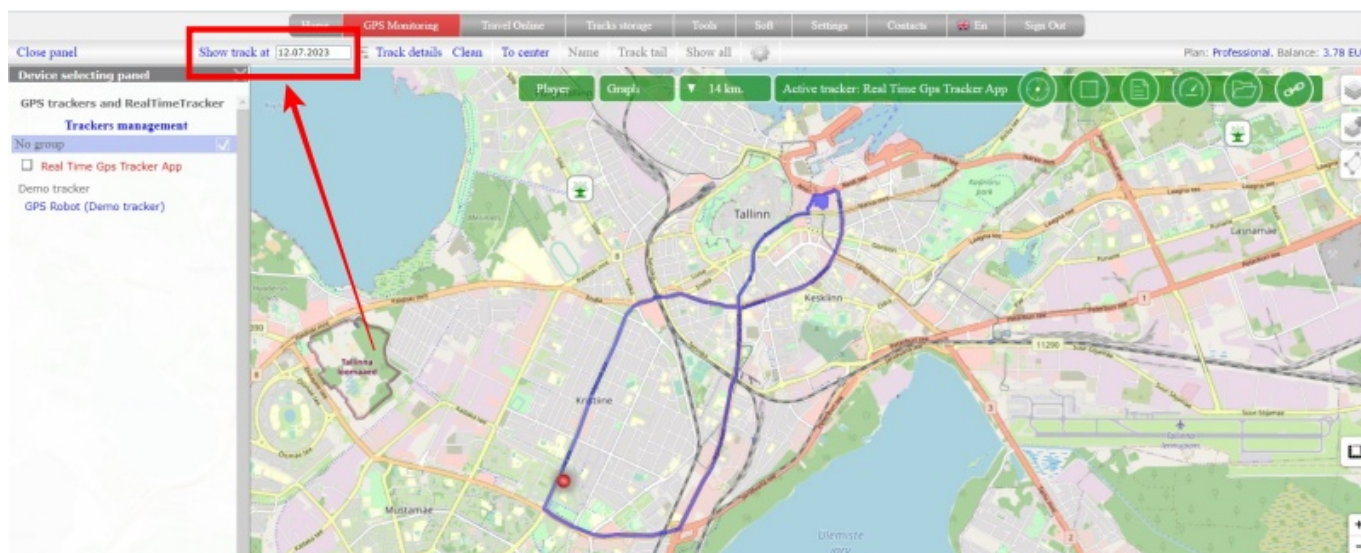


How to view the track for the current day?

When entering the map, the current date is set in the calendar.

Click on “**Show track at**” and the tracker's movement for the current day will be displayed on the map.



From:

<https://help.livegpstracks.com/> - LiveGPSTracks.com

Permanent link:

https://help.livegpstracks.com/doku.php?id=how_to_view_the_track_for_the_current_day

Last update: **2023/07/12 17:43**

