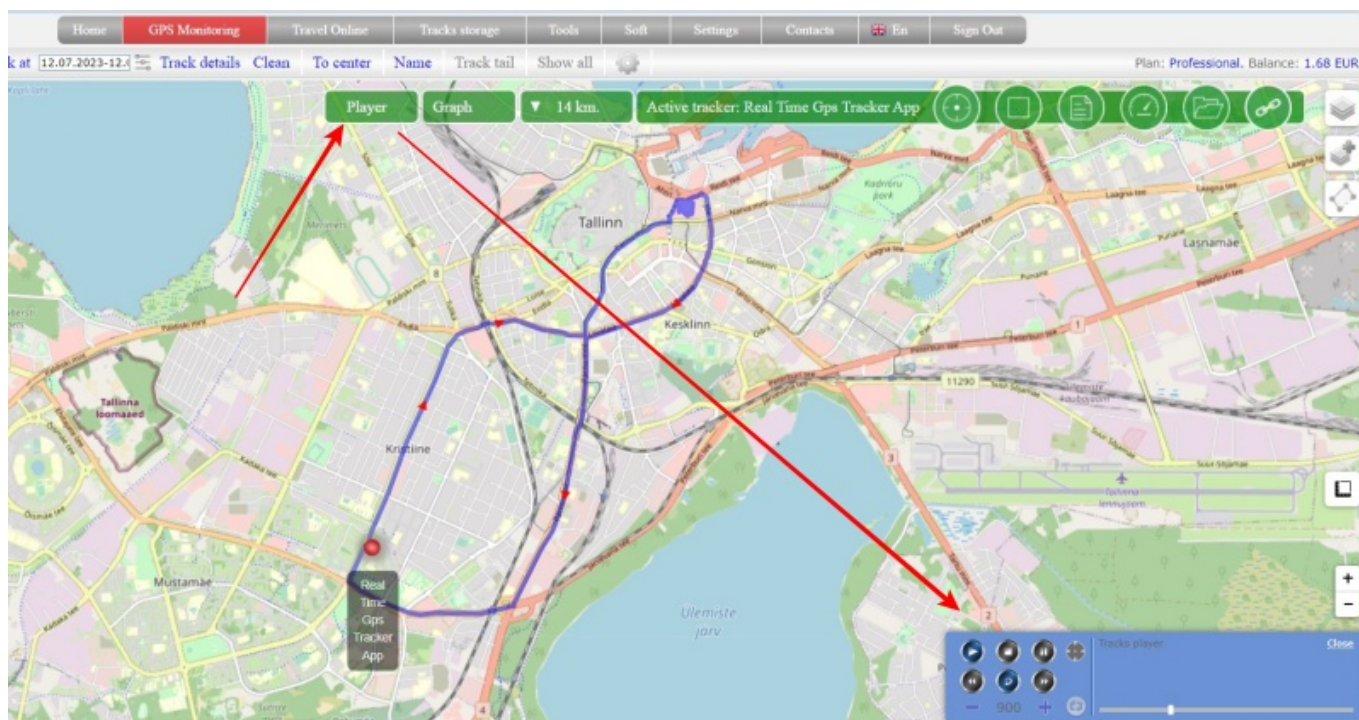


Player

Display the track for the desired date.

Additional buttons will appear on the map. Find the **“Player”** button and click on it.

The player panel will appear in the lower right corner.



During the playback of the track, a blue arrow will “run” along it, the same as is displayed when viewing the track in detail. The direction of the arrow indicates the direction the tracker is moving. The player panel will display information about the data at each point.

Description of the player panel buttons:

- ☒ Start playing a track
- ☒ Stop playing a track
- ☒ Pause a track
- ☒ When playing a track, moves the map in the direction of movement
- ☒ ☒ Manual track rewind (back and forth)
- ☒ Play the track from the beginning after the end
- ☒ ☒ Decrease and increase the speed of playing a track
- ☒ Reset track playback speed to default value

From:

<https://help.livegpstracks.com/> - **LiveGPSticks.com**

Permanent link:

https://help.livegpstracks.com/doku.php?id=track_player

Last update: **2023/08/09 00:08**

